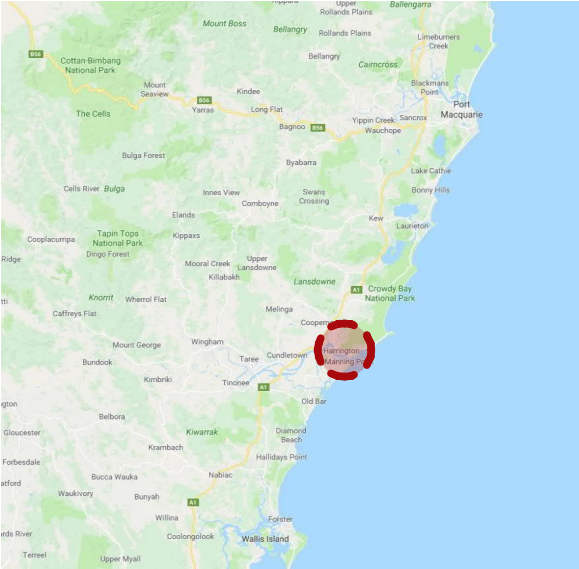
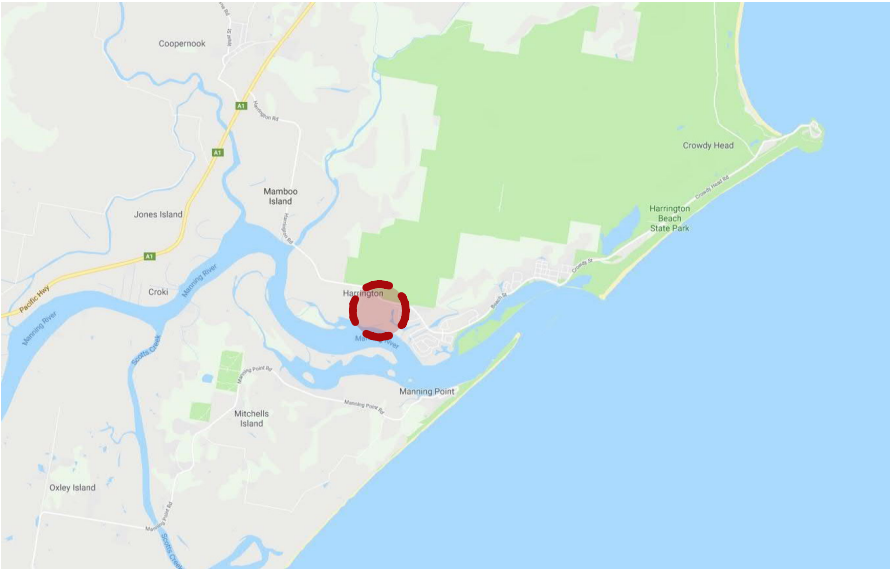


# HARRINGTON WATERS LIFESTYLE VILLAGE

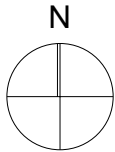
LOT 2,4 & 6, DP 1219123, MANOR RD & HARRINGTON RD, HARRINGTON



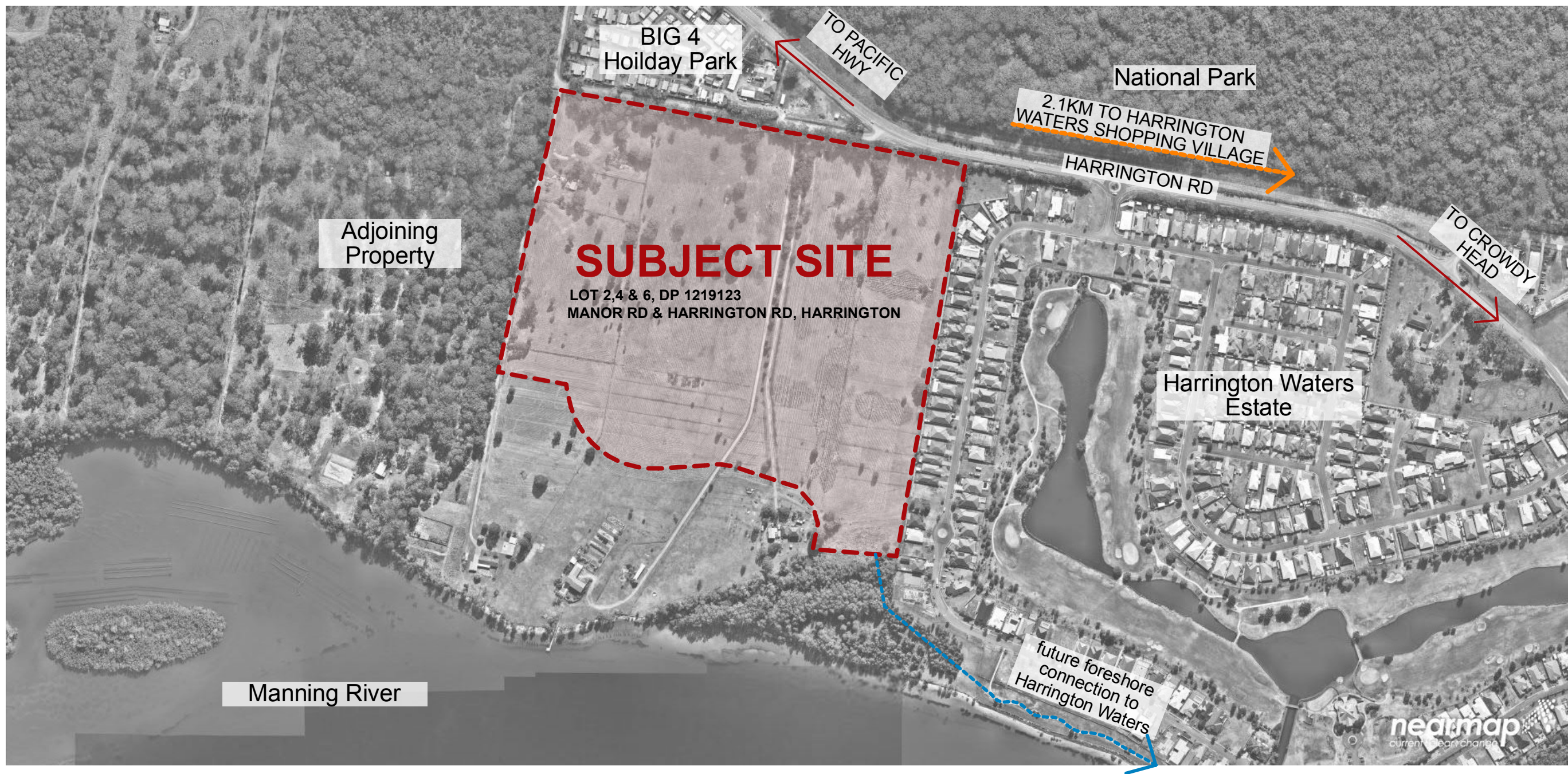
REGIONAL CONTEXT MAP



LOCAL CONTEXT MAP

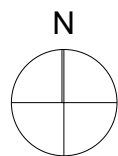






DA

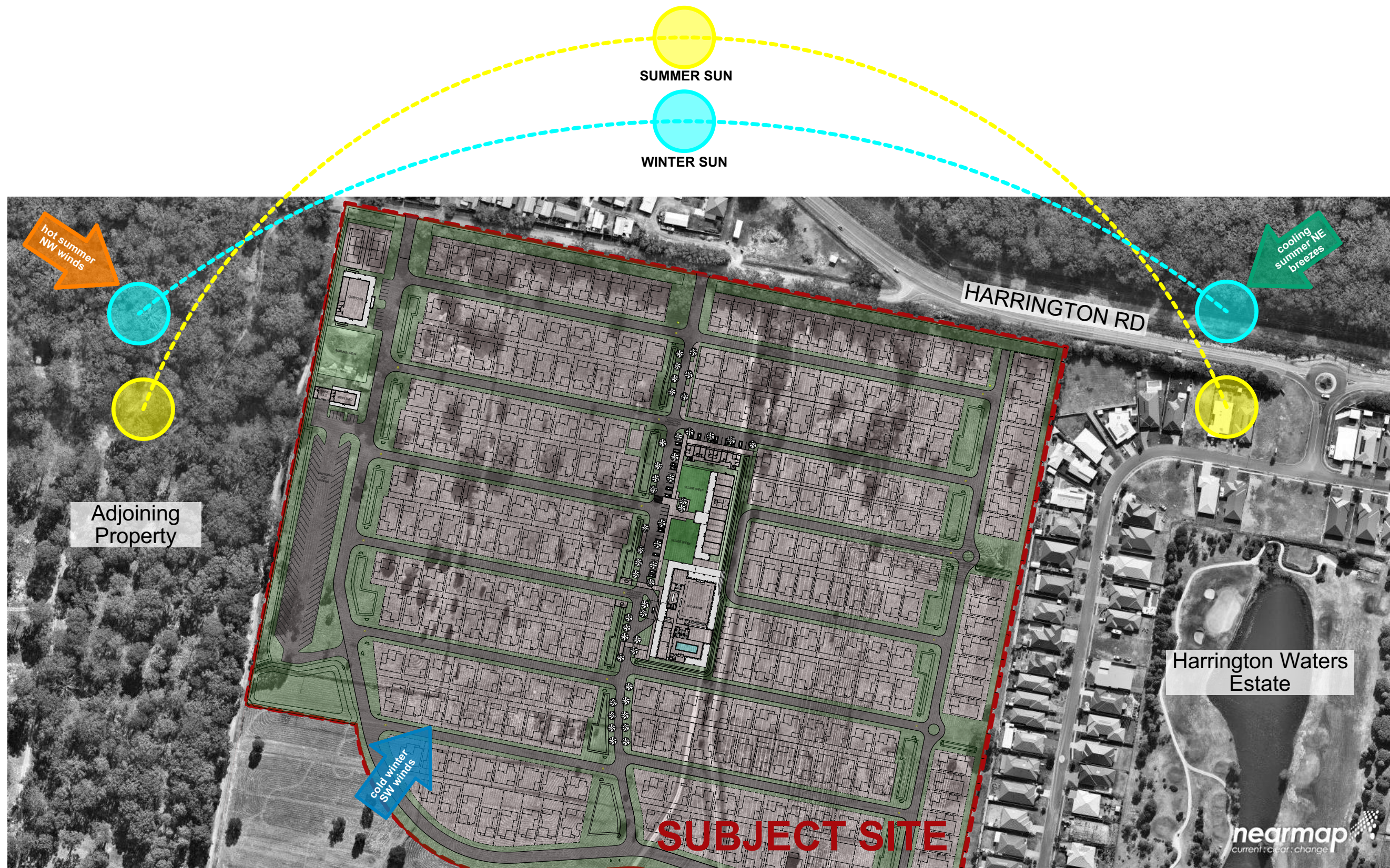
11843-Central Facilities v21.pln - 5.09.2018  
11843 - a100 - Sept. '18 - rev [b]



# Harrington Waters Lifestyle Village

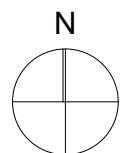
context analysis  
scale NTS





DA

11843-Central Facilities v21 [2].pln - 19.09.2018  
11843 - a101 - Sept. '18 - rev [b]



# Harrington Waters Lifestyle Village

site analysis plan  
scale NTS



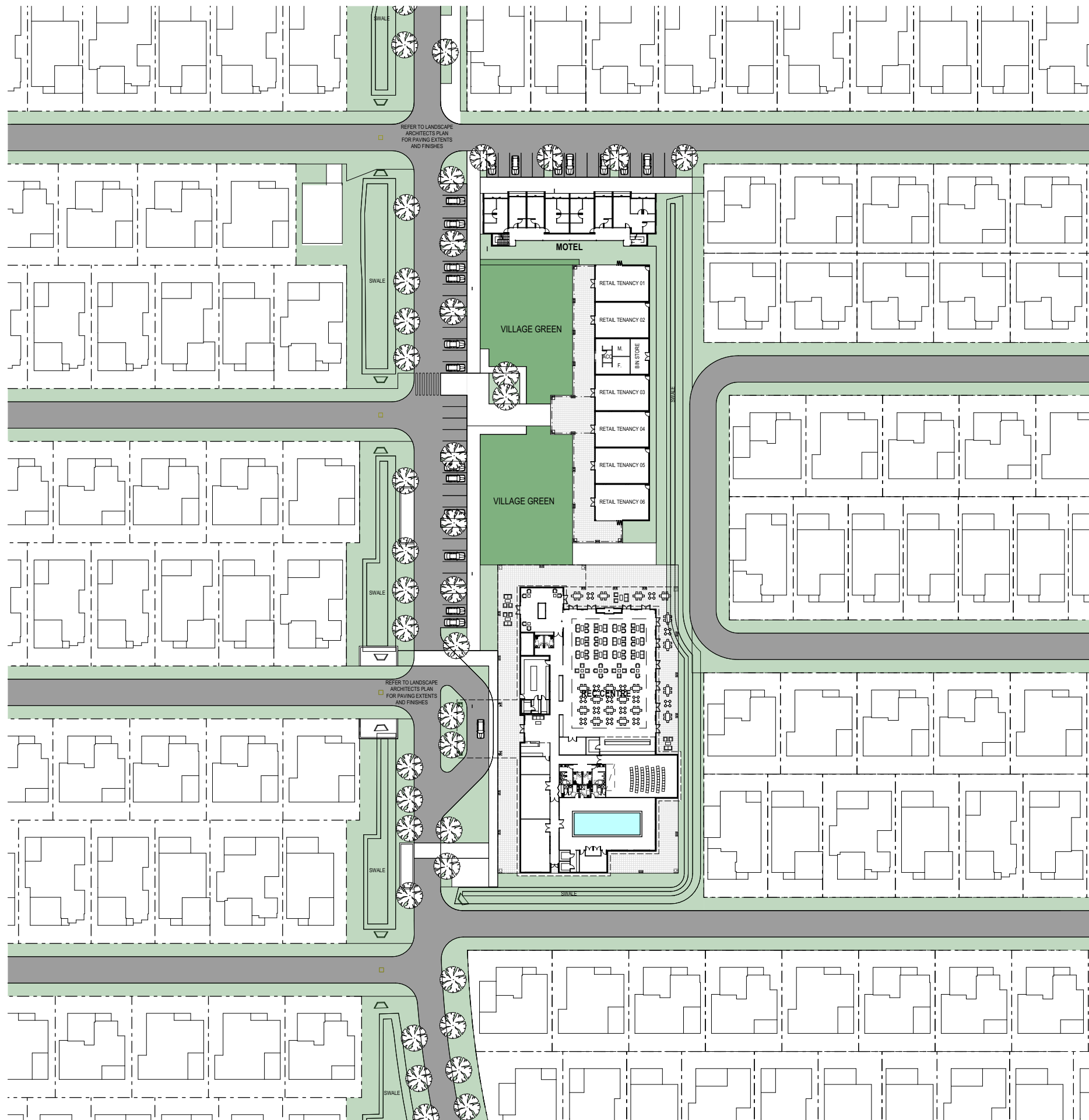
11843-Central Facilities v21 [2].pln - 19.09.2018  
11843 - a102 - Sept. '18 - rev [b]

# Harrington Waters Lifestyle Village

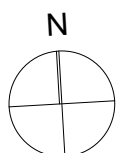
site masterplan  
scale 1 : 1000 @ A1







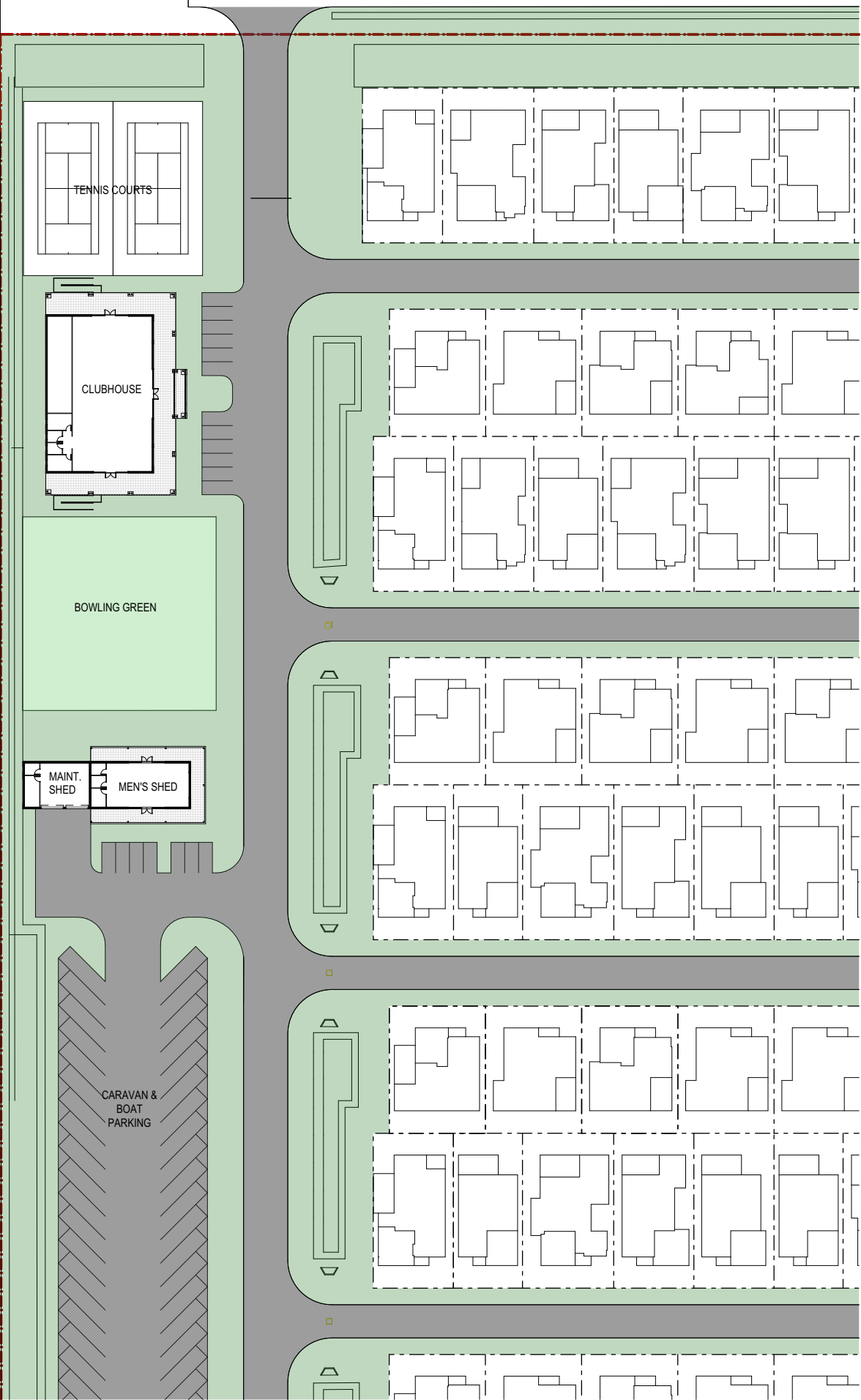
11843-Central Facilities v21 [2].pln - 19.09.2018  
11843 - a103 - Sept '18 - rev [d]



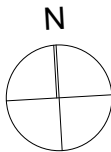
# Harrington Waters Lifestyle Village

central facilities - site plan  
scale 1 : 500 @ A1





11843-Central Facilities v21 [2].pln - 19.09.2018  
11843 - a104 - Sept '18 - rev [b]

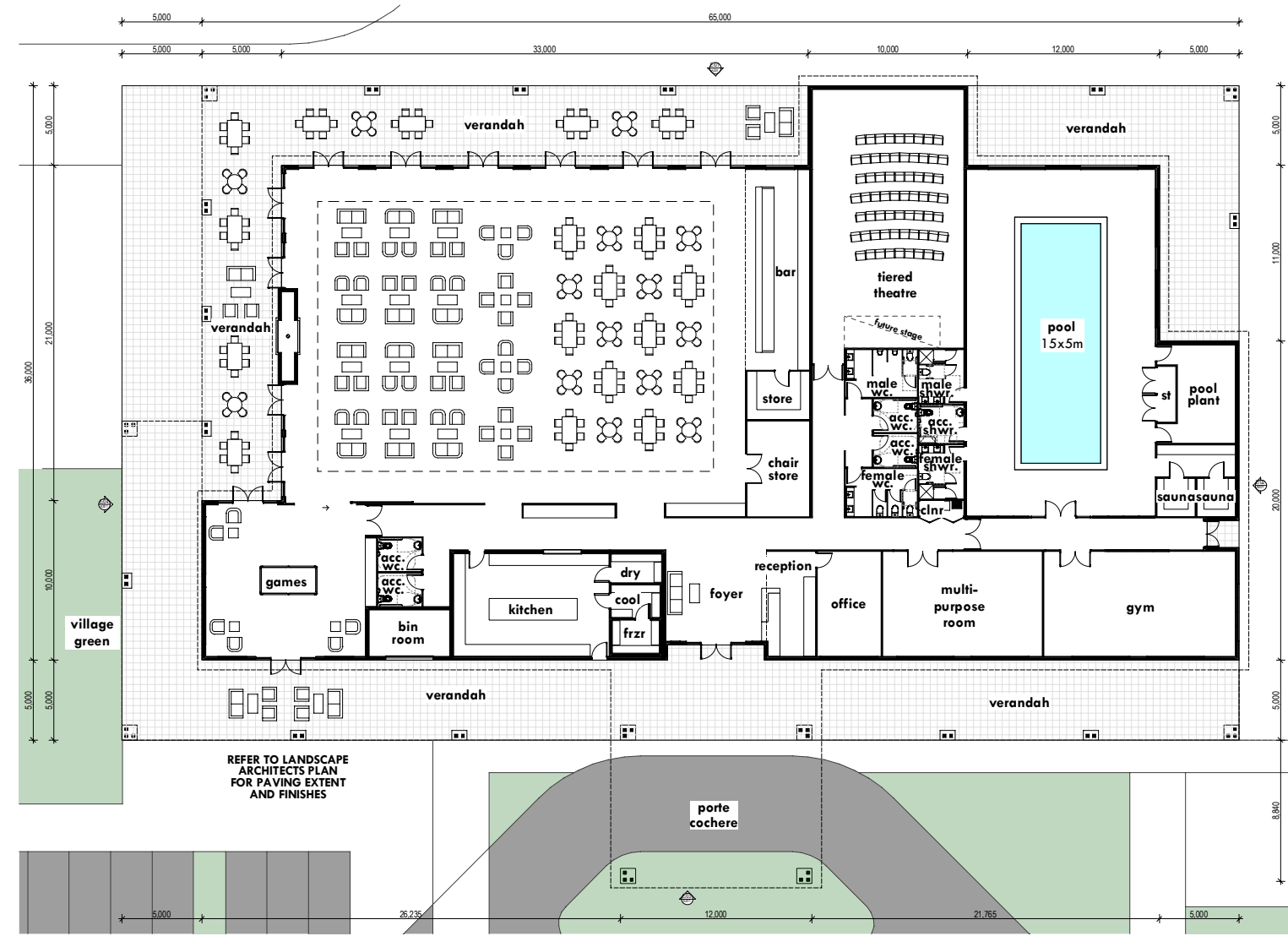


# Harrington Waters Lifestyle Village

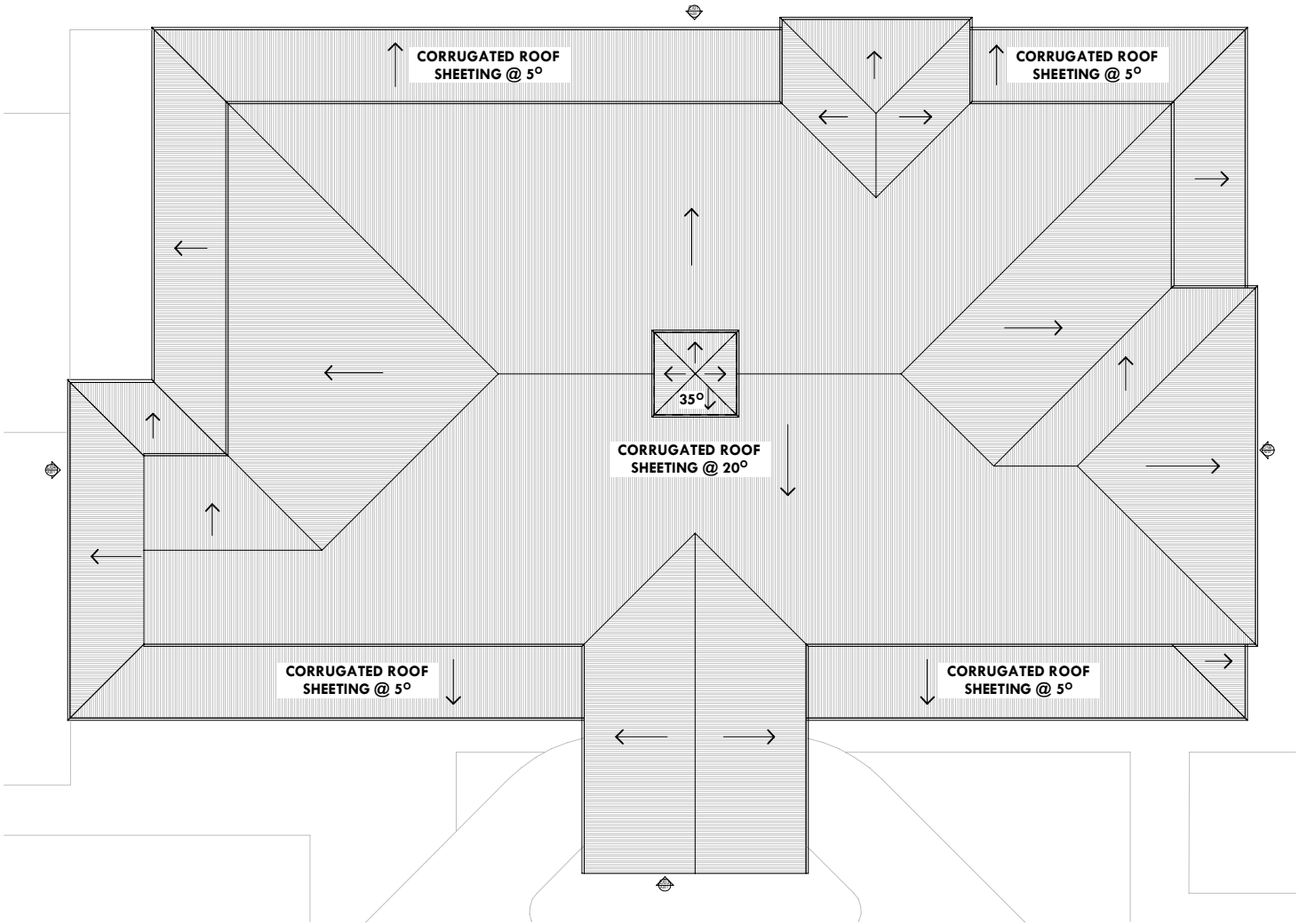
clubhouse/mens shed - site plan  
scale 1 : 500 @ A1



**FLOOR AREA**  
REC. CENTRE = 1890m<sup>2</sup>  
REC. VERANDAH = 970m<sup>2</sup>  
  
TOTAL = 2860m<sup>2</sup>



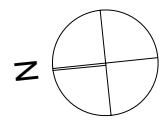
REC. FLOOR PLAN



REC. ROOF PLAN

**EJE ARCHITECTURE**  
ACN 002 912 943 | ABN 82 644 649 849  
Nominated Architect - Bernard Collins  
NSW Architects Registration No 4438  
A 412 KING STREET NEWCASTLE NSW 2300 AUSTRALIA  
P +61 2 4929 2353 | F +61 2 4925 2200 | E mail@eje.com.au | W www.eje.com.au

COMPLETION OF THE QUALITY ASSURANCE CHECKS IS VERIFICATION THAT THE DOCUMENT CONFORMS WITH THE REQUIREMENTS OF THE QUALITY PROJECT PLAN WHERE THE QUALITY ASSURANCE CHECK IS INCOMPLETE THIS DOCUMENT IS PRELIMINARY FOR INFORMATION PURPOSES ONLY. OR SUCH PURPOSES AS STATED IN THE REVISION COLUMN.  
THE IDEAS, INFORMATION AND CONCEPTS CONTAINED IN THIS DOCUMENT ARE THE PROPERTY OF EJE ARCHITECTURE. PHOTOCOPYING OR REPRODUCING THIS DOCUMENT AND PASSING IT ON TO OTHERS WITHOUT THE EXPRESS PERMISSION OF EJE ARCHITECTURE IS AN INFRINGEMENT OF COPYRIGHT. ©



# Harrington Waters Lifestyle Village

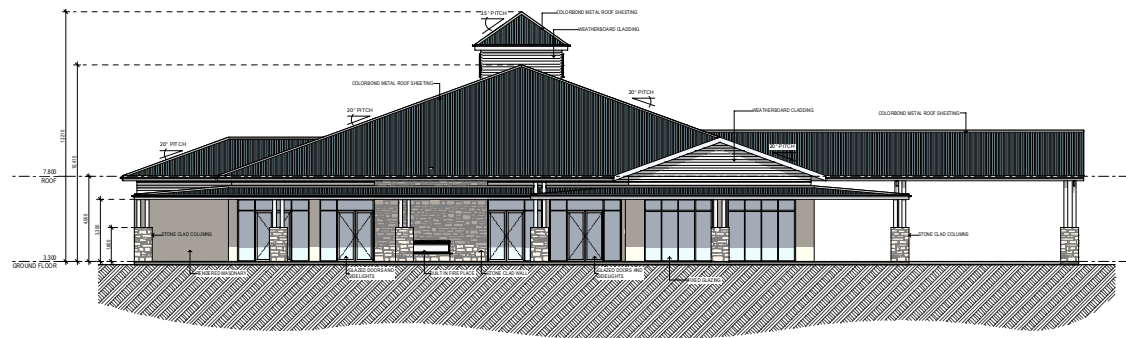
rec centre - floor & roof plan  
scale 1 : 200 @ A1

11843-SK-Rec Centre v21.pln - 5.09.2018  
11843 - a200 - Sept '18 - rev [c]

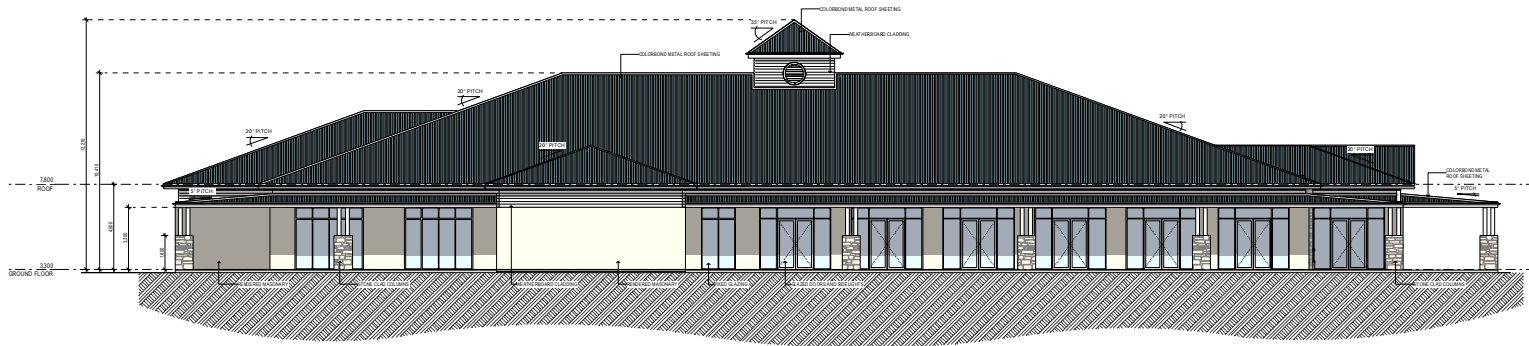


DA

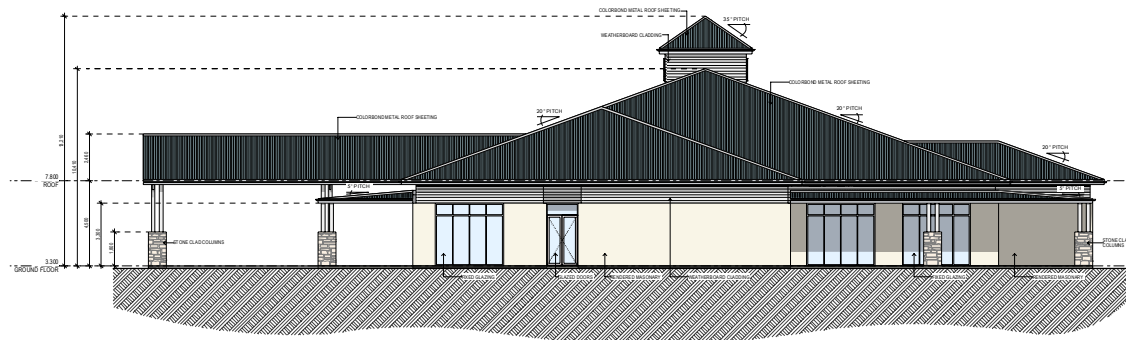




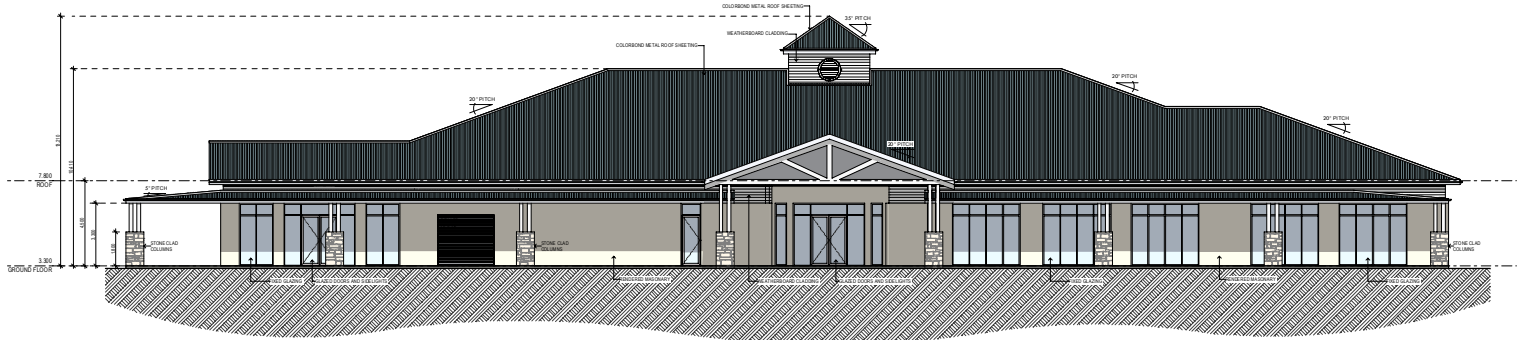
NORTH ELEVATION



EAST ELEVATION



SOUTH ELEVATION



WEST ELEVATION

DA

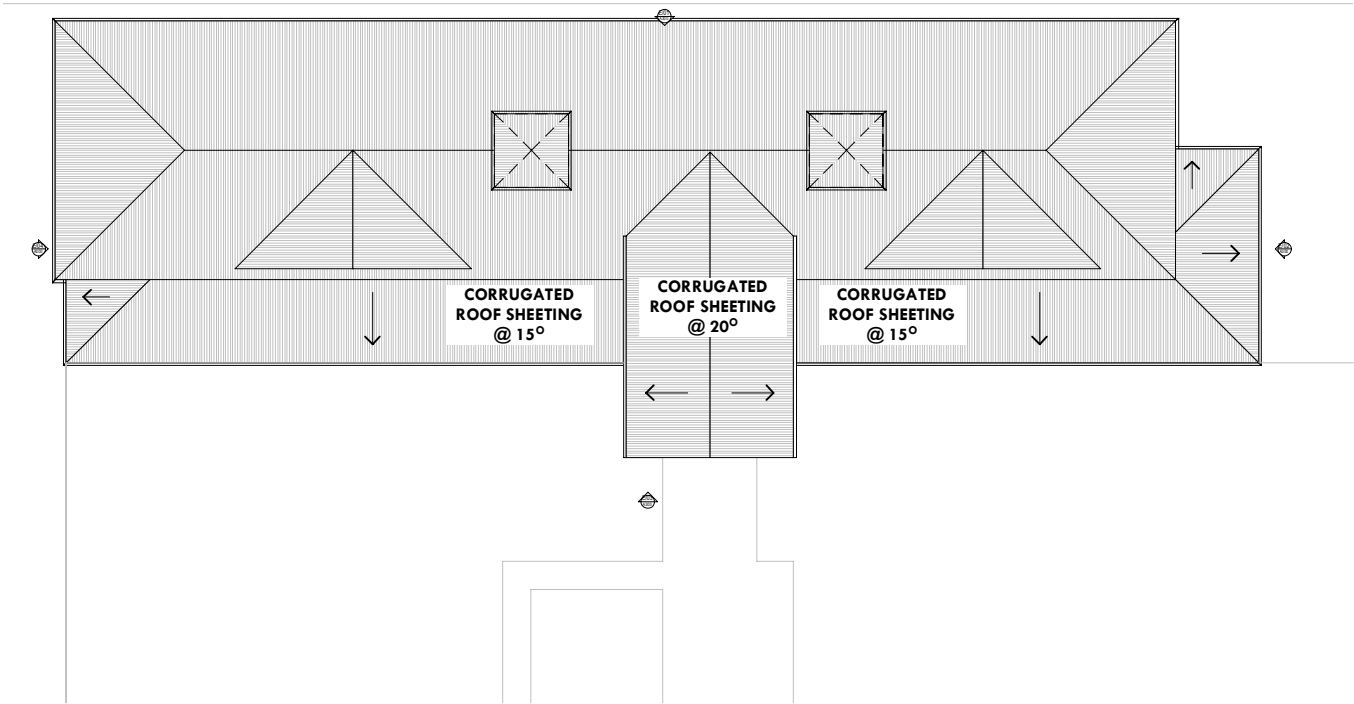
# Harrington Waters Lifestyle Village

rec centre - elevations  
scale 1 : 200 @ A1

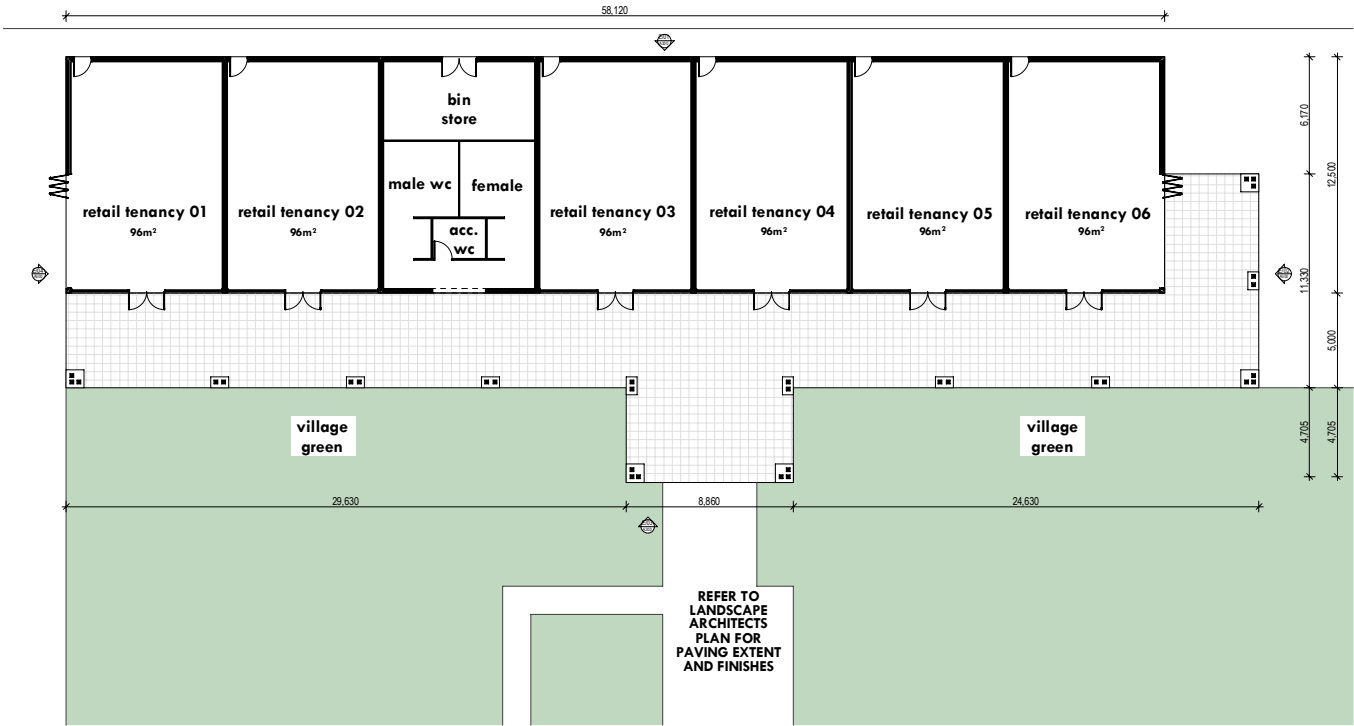


FLOOR AREAS

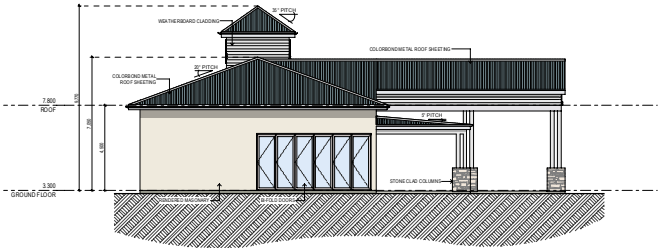
IND. TENANCY = 96m<sup>2</sup>  
RETAIL = 690m<sup>2</sup>



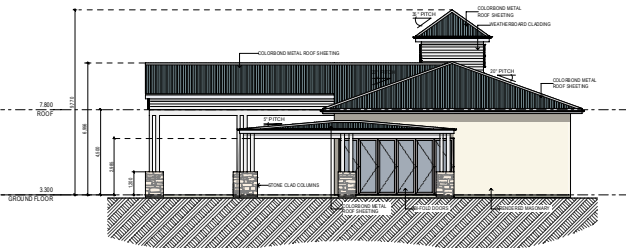
RETAIL ROOF PLAN



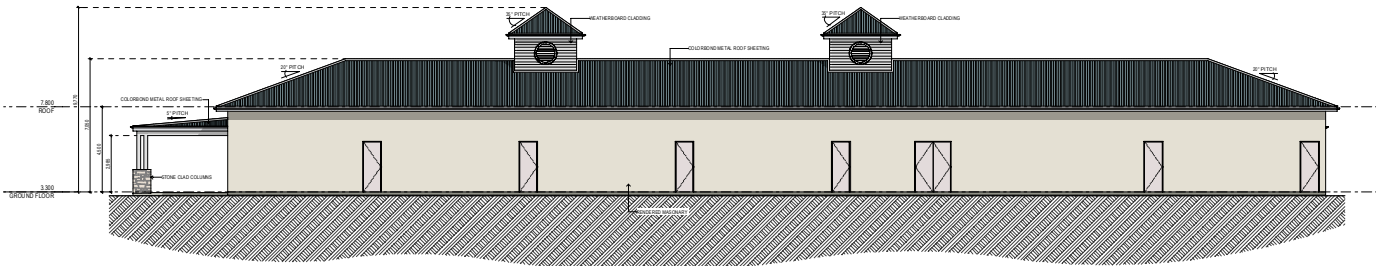
RETAIL FLOOR PLAN



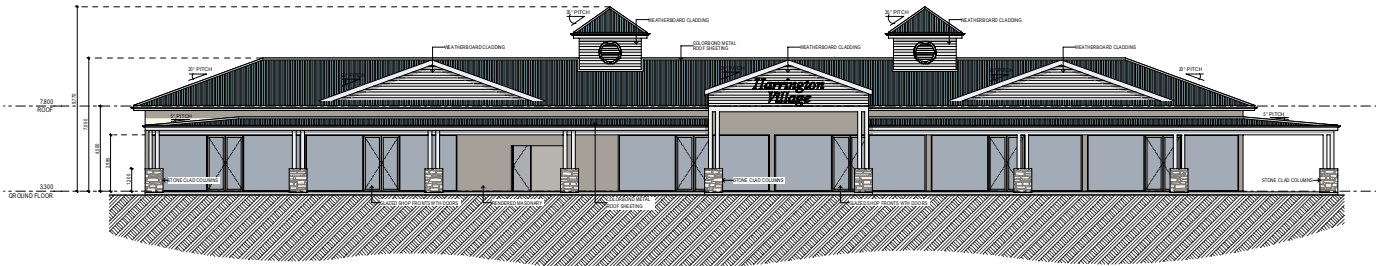
NORTH ELEVATION



SOUTH ELEVATION



EAST ELEVATION

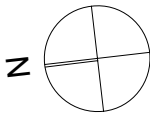


WEST ELEVATION

EJE ARCHITECTURE  
ACN 002 912 843 | ABN 82 644 649 849  
Nominated Architect - Bernard Collins  
NSW Architects Registration No. 4438  
A 412 KING STREET NEWCASTLE NSW 2300 AUSTRALIA  
P +61 2 4929 2353 | F +61 2 4925 2200 | E mail@eje.com.au | W www.eje.com.au

COMPLETION OF THE QUALITY ASSURANCE CHECKS IS VERIFICATION THAT THE DOCUMENT CONFORMS WITH THE REQUIREMENTS OF THE QUALITY PROJECT PLAN. WHERE THE QUALITY ASSURANCE CHECK IS INCOMPLETE THIS DOCUMENT IS PRELIMINARY FOR INFORMATION PURPOSES ONLY. ORIGIN PURPOSES AS STATED IN THE REVISION COLUMN.

THE IDEAS, INFORMATION AND CONCEPTS CONTAINED IN THIS DOCUMENT ARE THE PROPERTY OF EJE ARCHITECTURE. PHOTOCOPYING OR REPRODUCING THIS DOCUMENT AND PASSING IT ONTO OTHERS WITHOUT THE EXPRESS PERMISSION OF EJE ARCHITECTURE IS AN INFRINGEMENT OF COPYRIGHT. ©



# Harrington Waters Lifestyle Village

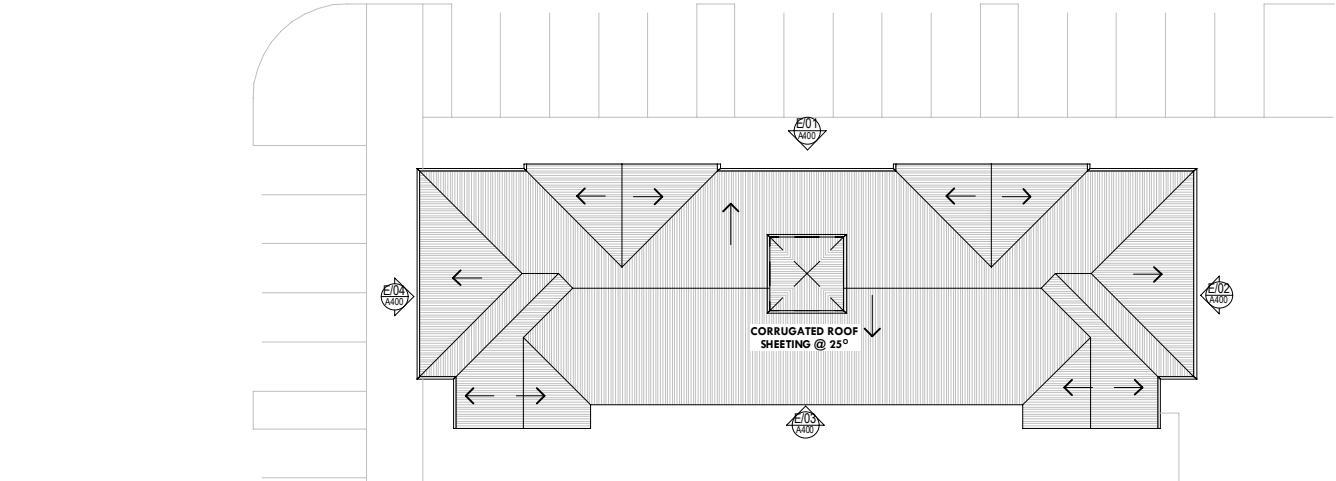
retail tenancies - plans & elevations  
scale 1 : 200 @ A1

11843-SK-Retail v21.pln - 5.09.2018  
11843 - a300 - Sept '18 - rev [c]

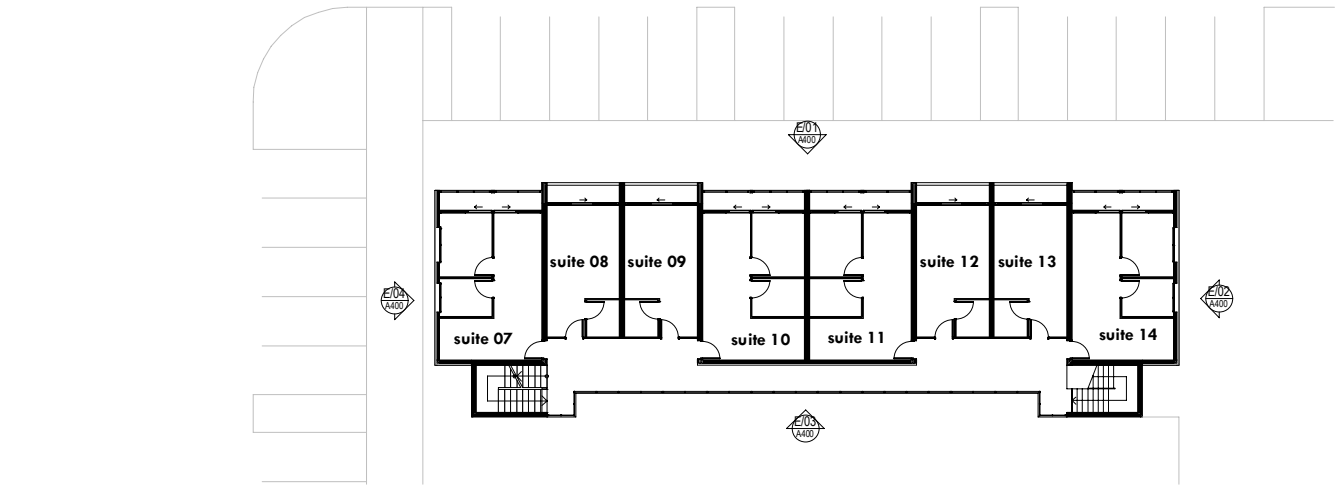




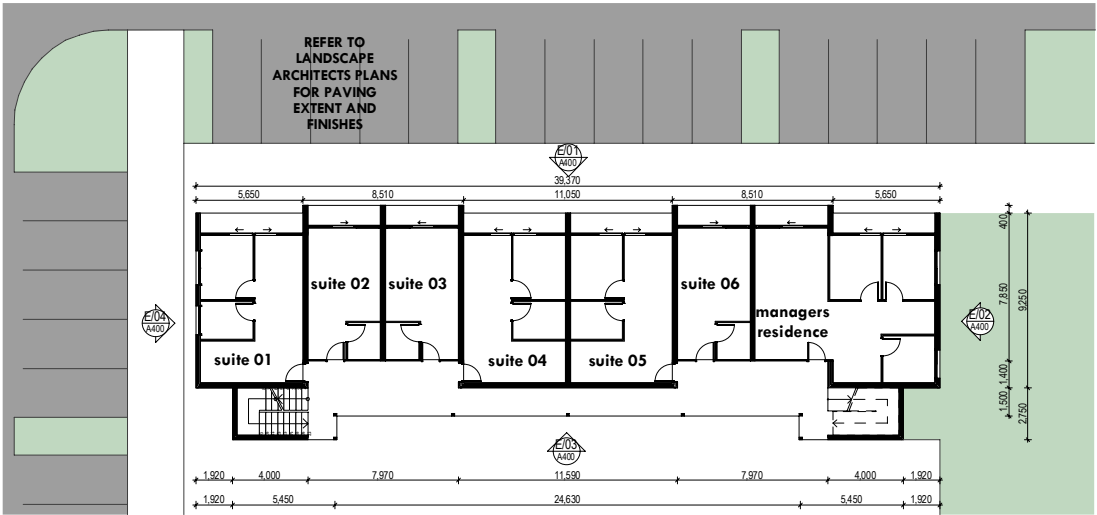
**FLOOR AREAS**  
HOTEL GROUND FLOOR = 290m<sup>2</sup>  
HOTEL FIRST FLOOR = 290m<sup>2</sup>  
**TOTAL = 580m<sup>2</sup>**



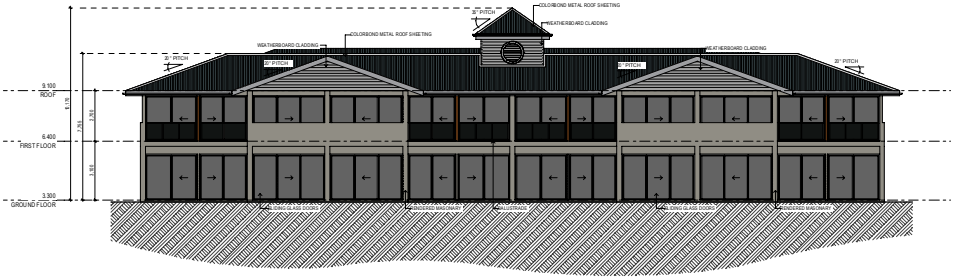
MOTEL ROOF PLAN



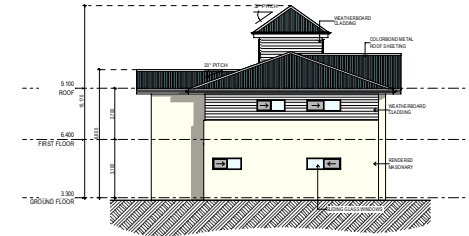
MOTEL GROUND FLOOR PLAN



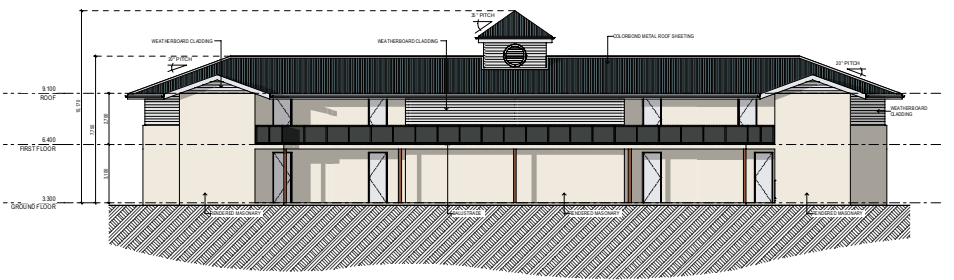
MOTEL GROUND FLOOR PLAN



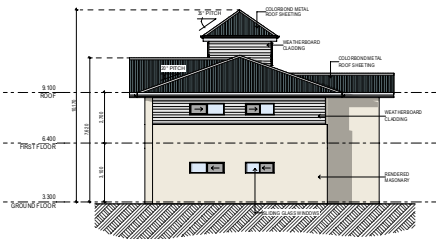
NORTH ELEVATION



EAST ELEVATION



SOUTH ELEVATION

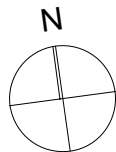


WEST ELEVATION

**EJE ARCHITECTURE**  
ACN 002 912 843 | ABN 82 644 649 849  
Nominated Architect - Bernard Collins  
NSW Architects Registration No. 4438  
A 412 KING STREET NEWCASTLE NSW 2300 AUSTRALIA  
P +61 2 4929 2353 | F +61 2 4925 2200 | E mail@eje.com.au | W www.eje.com.au

COMPLETION OF THE QUALITY ASSURANCE CHECKS IS VERIFICATION THAT THE DOCUMENT CONFORMS WITH THE REQUIREMENTS OF THE QUALITY PROJECT PLAN. WHERE THE QUALITY ASSURANCE CHECK IS INCOMPLETE THIS DOCUMENT IS PRELIMINARY FOR INFORMATION PURPOSES ONLY. ORIGIN PURPOSES AS STATED IN THE REVISION COLUMN.

THE IDEAS, INFORMATION AND CONCEPTS CONTAINED IN THIS DOCUMENT ARE THE PROPERTY OF EJE ARCHITECTURE. PHOTOCOPYING OR REPRODUCING THIS DOCUMENT AND PASSING IT ONTO OTHERS WITHOUT THE EXPRESS PERMISSION OF EJE ARCHITECTURE IS AN INFRINGEMENT OF COPYRIGHT. ©



# Harrington Waters Lifestyle Village

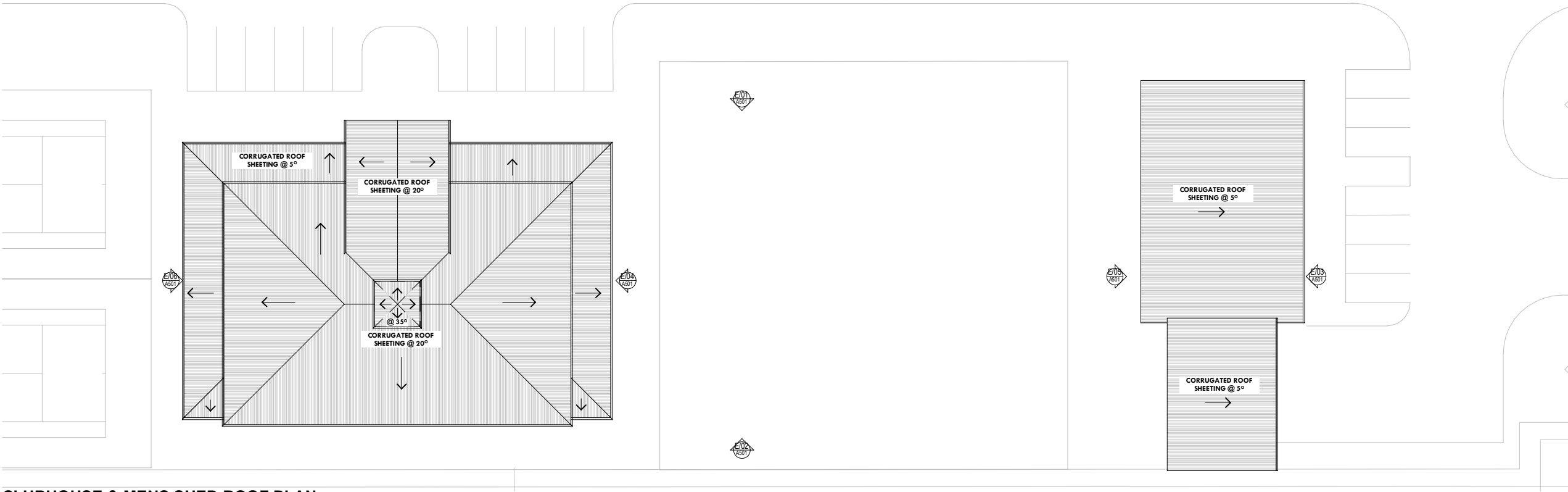
motel - plans & elevations  
scale 1 : 200 @ A1

11843 - SK - HOTEL v21.pln - 5.09.2018  
11843 - a400 - Sept '18 - rev [c]

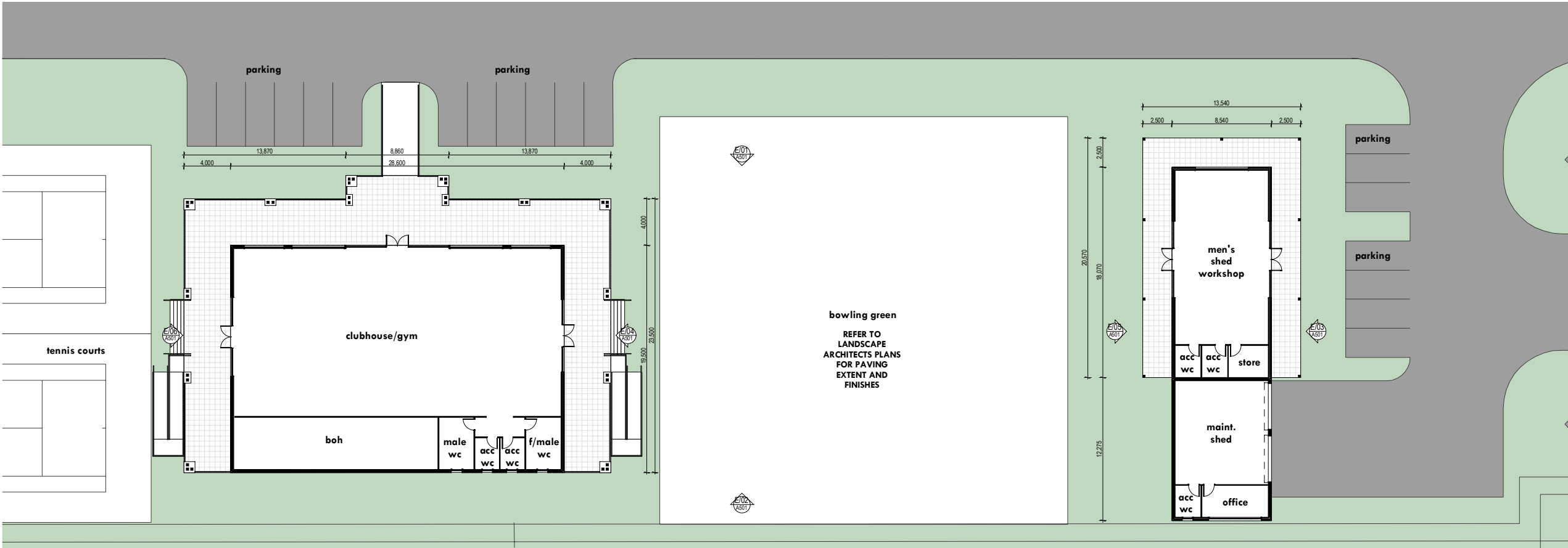




**FLOOR AREAS**  
**CLUBHOUSE = 560m<sup>2</sup>**  
**MEN'S SHED = 155m<sup>2</sup>**  
**MAINT. STORE = 105m<sup>2</sup>**



CLUBHOUSE & MENS SHED ROOF PLAN

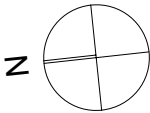


CLUBHOUSE & MENS SHED FLOOR PLAN

**EJE ARCHITECTURE**  
ACN: 002 912 943 | ABN: 82 644 649 849  
Nominated Architect - Bernard Collins  
NSW Architects Registration No: 4438  
A: 412 KING STREET NEWCASTLE NSW 2300 AUSTRALIA  
P: +61 2 4929 2353 | F: +61 2 4925 2200 | E: mail@eje.com.au | W: www.eje.com.au

COMPLETION OF THE QUALITY ASSURANCE CHECKS IS VERIFICATION THAT THE DOCUMENT CONFORMS WITH THE REQUIREMENTS OF THE QUALITY PROJECT PLAN. WHERE THE QUALITY ASSURANCE CHECK IS INCOMPLETE THIS DOCUMENT IS PRELIMINARY FOR INFORMATION PURPOSES ONLY. ORIGINAL PURPOSES AS STATED IN THE REVISION COLUMN.

THE IDEAS, INFORMATION AND CONCEPTS CONTAINED IN THIS DOCUMENT ARE THE PROPERTY OF EJE ARCHITECTURE. PHOTOCOPYING OR REPRODUCING THIS DOCUMENT AND PASSING IT ON TO OTHERS WITHOUT THE EXPRESS PERMISSION OF EJE ARCHITECTURE IS AN INFRINGEMENT OF COPYRIGHT. ©



# Harrington Waters Lifestyle Village

clubhouse & men's shed - floor & roof plan

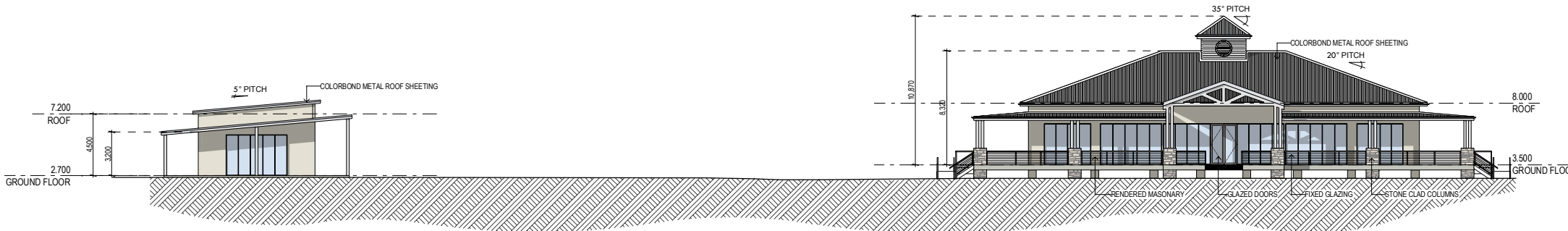
scale 1 : 200 @ A1

11843\_Mens Shed-Clubhouse V21+.pln - 5.09.2018  
11843 - a500 - Sept. '18 - rev [b]

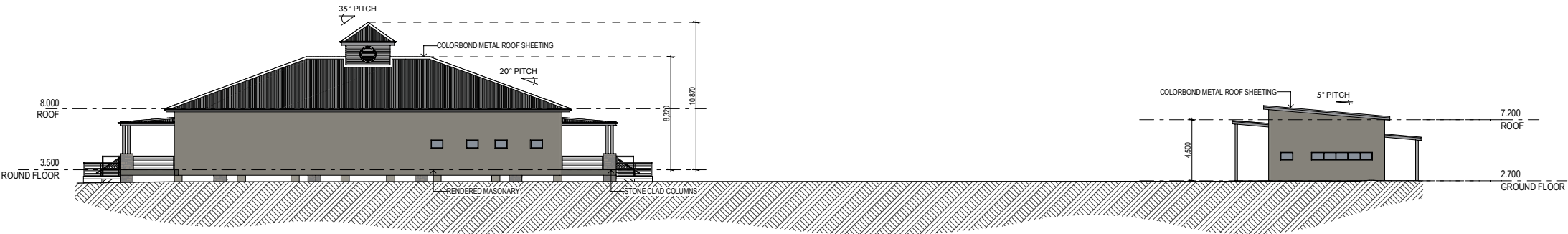


DA

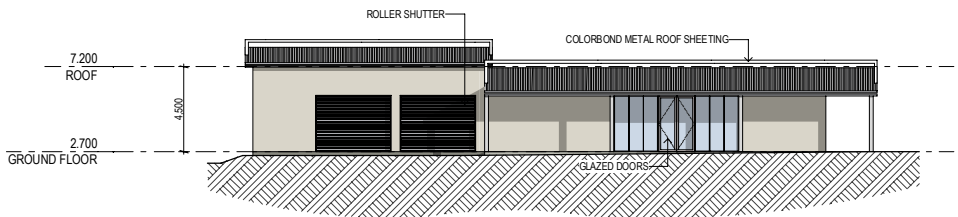




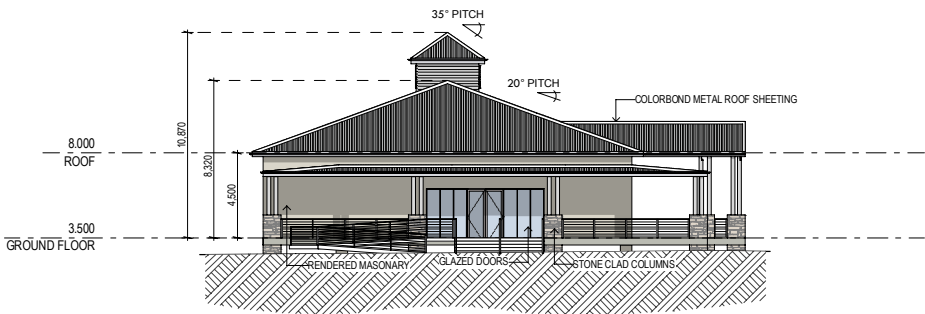
EAST ELEVATION



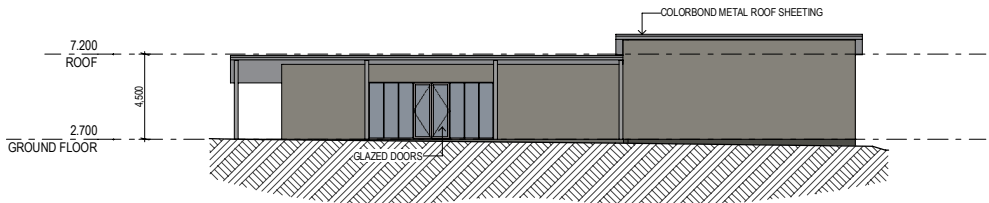
WEST ELEVATION



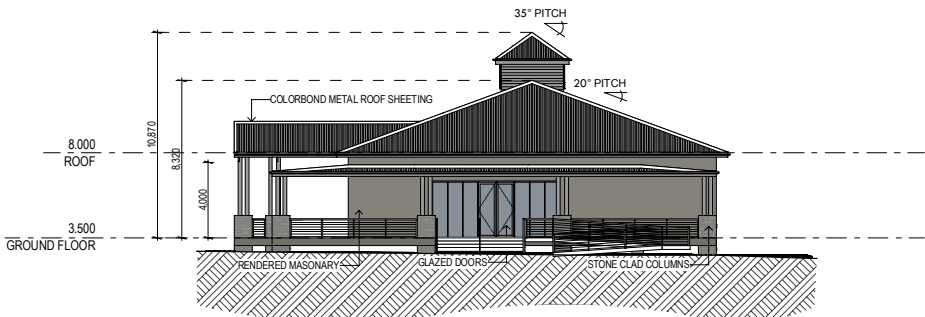
MEN SHED SOUTH ELEVATION



CLUBHOUSE SOUTH ELEVATION



MEN SHED NORTH ELEVATION



CLUBHOUSE NORTH ELEVATION

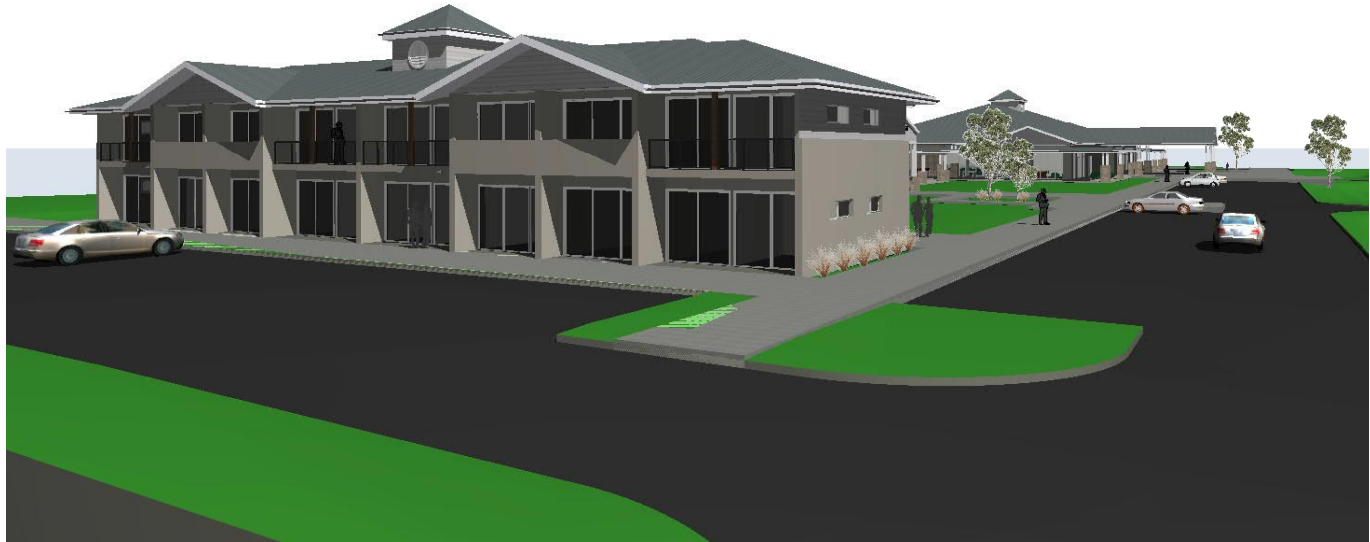
DA

# Harrington Waters Lifestyle Village

clubhouse & men's shed - elevations

scale 1 : 200 @ A1





DA

# Harrington Waters Lifestyle Village

central facilities - 3D perspectives  
 scale NTS @ A1